

ITEM #: \_\_\_\_\_

QUANTITY: \_\_\_\_\_

# ONDO TO-GO Convertible Food Locker System



## MODEL # ONDO TOGO

**Patented Convertible Temperature Technology** is available in ambient, heated (145 degrees F), or refrigerated (35 degrees F), ONDO is the only food locker technology available that can easily convert individual lockers from one temperature application to another.

**Modular Configurations** create flexibility in space through (3) standard locker sizes including (small) 8" x 12", (medium) 12" x 12" and (large) 12" x 16". Mix and match tower configurations based upon food packaging size and available floor or counter space. Expandable reach-in and pass-thru (rear load) options are available.

**Secure and Food Safe Holding** ensure that there is control over food product from order, through production and loading into the locker, through pick up. ONDO can support "Allergen Free" controlled food zones.

**Easy to Use Digital Technology** supported through a cloud-based interface provides for seamless order processing and order fulfillment. Digital touchscreen and infra-red scanners simplify operator and customer engagement for loading and pick up. POS compliant and 3rd party delivery service compatible.



**"If there's an app for that, there's an ONDO for that!"**

## Standard Features

- All lockers contain individual heated and refrigerated thermal plates for temperature convertibility
- Automatic defrost with condensate evaporator
- Constructed from Heavy-duty powder coated steel
  - (8" x 12") 5 lockers vertically stacked
  - (12" x 12") 4 lockers vertically stacked
  - (12" x 16") 4 lockers vertically stacked
- User Interface column with digital touchscreen, Infra-red scanner and software package
- High efficiency LED, temperature specific multi-color LED internal locker lighting
- Front-load (reach-in) configuration
- Spring loaded front doors
- Solid front doors
- Independently adjustable locker temperature controls
- Standard RAL colors:
  - Blue (RAL 5019)      ■ White (RAL 9010),
  - Green (RAL 6032)   ■ Red (RAL 3020)
  - Black (RAL 9005)

*Note: Requires annual SaaS subscription fee*

## Optional Accessories

- Dual pane glass front door
- Back-load (pass thru) doors
  - Automated self-opening/closing front doors
  - Dual pane glass front doors
  - Dual pane insulated glass rear doors
- Note: Rear doors only available spring loaded*
- Optional RAL colors available
- Dual sided UI column with (2) digital touchscreens and (2) infra-red scanners
- Remote digital touchscreen and IR scanner
  - Front load
  - Rear load
- Additional lockers with UI columns
  - 8" x 12"
  - 12" x 12"
  - 12" x 16"
- POS integration



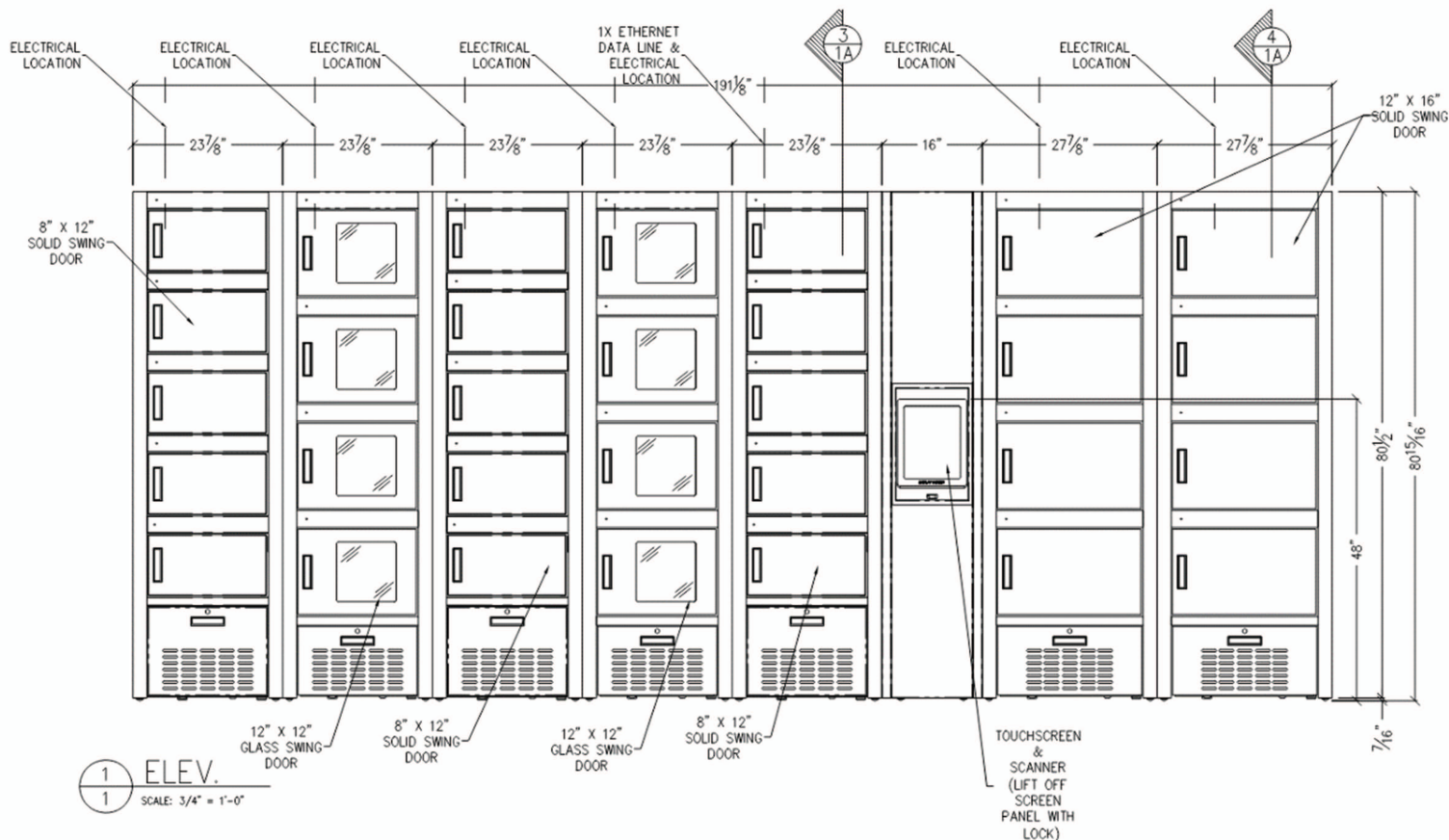
Conforms to UL Standard 197  
and NSF Standard 4; Certified  
To CSA Standard C22.2 No. 109  
NSF 4 for heated / NSF 7 for refrigerated

ITEM #: \_\_\_\_\_

QUANTITY: \_\_\_\_\_

# ONDO TO-GO

## Convertible Food Locker System



External Locker Dimensions	Width (Inches/CM)	Height (Inches/CM)	Depth (Inches/CM)	Uncrated Weight (lbs.)	Crated Weight (lbs.)
8" x 12" Locker	23.875" / 60.6425 CM	80.5" / 204.47 CM	28" / 71.12 CM	350 lbs.	450 lbs.
12" x 12" Locker	23.875" / 60.6425 CM	80.5" / 204.47 CM	28" / 71.12 CM	350 lbs.	450 lbs.
12" x 16" Locker	23.875" / 60.6425 CM	80.5" / 204.47 CM	28" / 71.12 CM	350 lbs.	450 lbs.
External - UI (user interface) Column (without lockers)	23.875" / 60.6425 CM	80.5" / 204.47 CM	28" / 71.12 CM	300 lbs.	400 lbs.
External - UI (user interface) Column (without lockers)	16" / 40.64 CM	80.5" / 204.47 CM	28" / 71.12 CM	200 lbs.	300 lbs.

Internal Locker Dimensions	Width (Inches/CM)	Height (Inches/CM)	Depth (Inches/CM) - Front Load	Depth (Inches/CM) - Front Load
8" x 12" Locker	9.875" / 25.0825 CM	11.875" / 30.1625 CM	21" / 53.34 CM	24.25" / 61.595 CM
12" x 12" Locker	9.875" / 25.0825 CM	11.875" / 30.1625 CM	21" / 53.34 CM	24.25" / 61.595 CM
12" x 16" Locker	9.875" / 25.0825 CM	11.875" / 30.1625 CM	21" / 53.34 CM	24.25" / 61.595 CM

Convertible Locker Column Utility Requirements Including UI Column with Lockers

Electrical	NEMA	Plug Qty
15 VAC, 208 220, 1 Phase, 20 amp	L14-20P	1/Column

UI (User Interface) Column Utility Requirements (without lockers)

Electrical	NEMA	Plug Qty
15 VAC, 15 amp	L14-20P	1/Column

Note: Columns with convertible temperature control (hot/cold/ambient) require individual dedicated power connections for each column. NEMA plugs are provided and will be coming out on the top of the column(s). Each user interface requires an Ethernet connection to the Internet. Annual SaaS subscription fees are required and apply to all systems. The locker system is designed for holding of pre-chilled or pre-heated products within appropriate locker temperature settings.

The ONDO locker system is designed for indoor use, but is available for built-in application with exterior wall. Please contact the factory for additional details. Condensation and ice accumulation may result if environment conditions exceed 80 degrees F or 60% R.H. RPI Reserves the right to make product improvements and the right to change materials and specifications without notice.